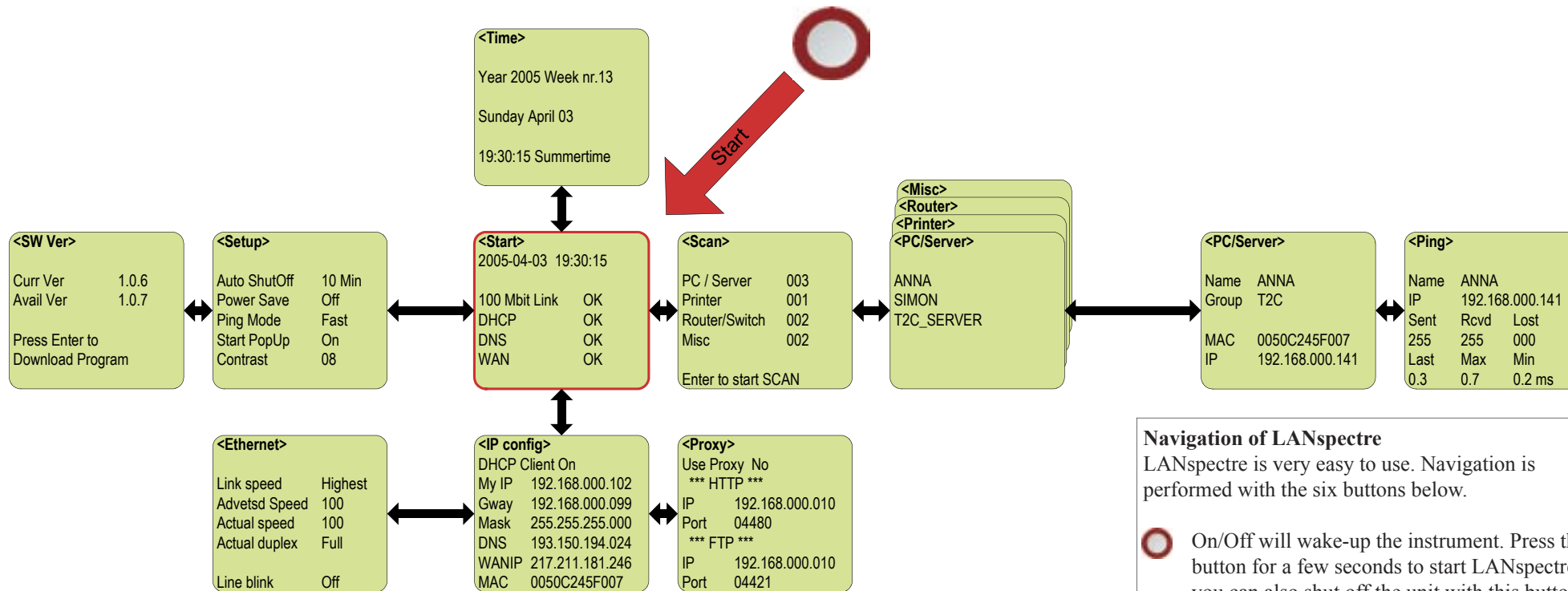


Quick Reference Guide LANspectre PRO









Quickstart LANspectre PRO

- Insert the battery
- Connect an Ethernet-cable to the RJ45-connector.
- Power-on the instrument by pressing the red button for a few seconds.
- Wait until the instrument shows 4 x OK. (If you not receive DHCP OK go to IP-config to enter IP-information manually. For further help and information go to www.lanspectre.com.)
- Use arrow right to Scan, press Enter and the instrument will scan your network.



Navigation of LANspectre

LANspectre is very easy to use. Navigation is performed with the six buttons below.

-  On/Off will wake-up the instrument. Press the button for a few seconds to start LANspectre, you can also shut off the unit with this button.
-  Arrow right means one step further in the menu-tree for the selected option.
-  Arrow left take you one step back in the menu map.
-  Arrow down means one step down within a menu, or from Start to IP config menu.
-  Arrow up take you one step up within a menu or up between menus.
-  Enter in the center performs various functions: In Scan-menu, Enter starts a new scan of the network. In Setup-menus Enter confirms various options or toggles between On and Off or similar.

Access your LANspectre by web browser

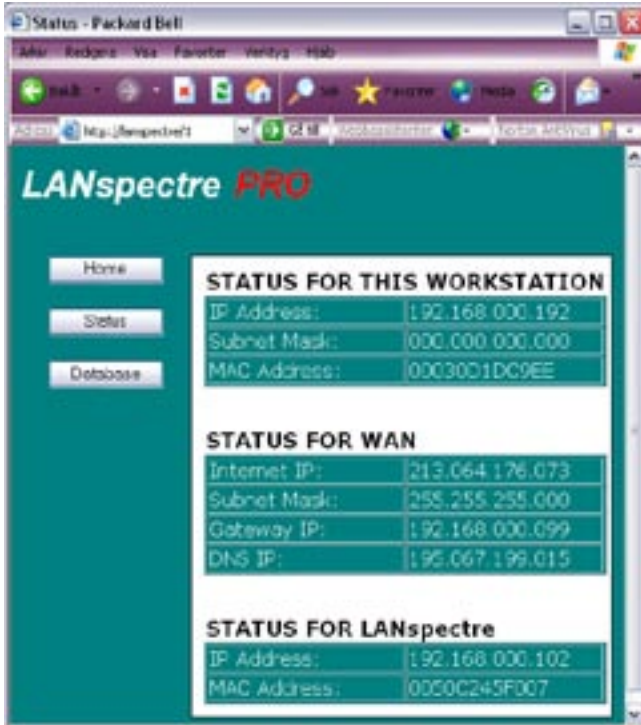
After you performed a scan on the handheld instrument you can access LANspectre from your local area network with a web browser.

Type “**lanspectre**” in the address-field of your internet-browser (Internet Explorer, Firefox or other). You can also use the IP address found in My IP under the IP Config menu on the instrument.

This feature gives you information about your network and most important a complete database of the network that LANspectre found during scan. You are able to save the information for future reference or for further editing in any software able to edit HTML-format (Word, Excel etc).

If the instrument is powered off (auto shut-off or manually) you would not be able to access the LANspectre with web browser. Then just power-on the instrument again.

The database remains in the instrument until next scan is performed. This means you are able to scan a network and bring the result with you in the instrument for further study off-site.



Database

The database show all found units.

SNMP-name	NetBios-Name	Group	MAC	ip
Internet Gateway Device			0050181CD59E	192.168.000.099
Netgear RP114			0030AB0D8789	192.168.000.002
HP JETDIRECT			0001E6A798EF - HP	192.168.000.004
	SIMON	SJ	000E35811475	192.168.000.146
	MINOM	SJ	0030F1340C78	192.168.000.147
	MAGNUS	SJ	00030D1DC9DE	192.168.000.192

Menu selection “Compl. Dbase” presents all services enabled for all units in the network.

ip	SNMP	HTTP	Telnet	Rout.	Swi..	Prin.	DHCP
192.168.000.099	X	X		X		X	X
192.168.000.002		X	X	X			
192.168.000.004	X	X	X			X	
192.168.000.146							
192.168.000.147		X					
192.168.000.192							

For further information and documentation in local languages visit;
www.lanspectre.com